

CASH COW

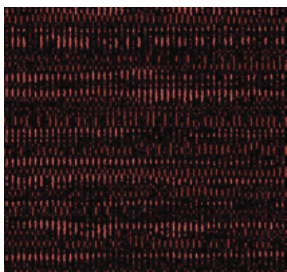




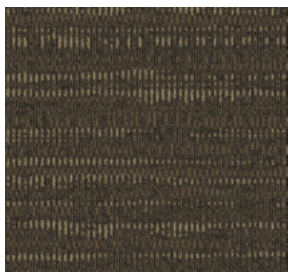
CONSTRUCTION	LOOP
PILE FIBER COMPOSITION	100% Nylon (Polyamide 6)
YARN TYPE	BCF
DYE METHOD	Solution Dyed
PILE WEIGHT	700 g/m ²
NUMBER OF TUFTS	268600/m ²
TUFTING GAUGE	1/10"
PRIMARY BACKING	Non-Woven
SECONDARY BACKING	StableShield - 100% Vinyl
OPTIONAL BACKING	Recova -PU Cushion, EcoShield -100% Recycled Vinyl
TILE SIZE	50 cm x 50 cm
PILE HEIGHT	2.4 mm / 5.5 mm
TOTAL PILE HEIGHT	7.5 mm
PILE TREATMENT	INVISTA Anti-Soil Treatment, Anti-Microbial (Optional)
RECOMMENDED INSTALLATION	Quarter Turn or Brick

SPECIFICATIONS

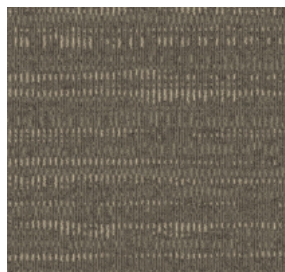
COLOURLINE



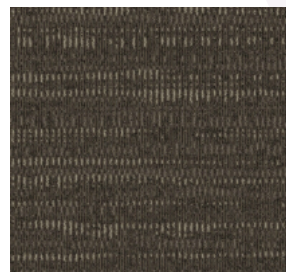
CASH COW - 726



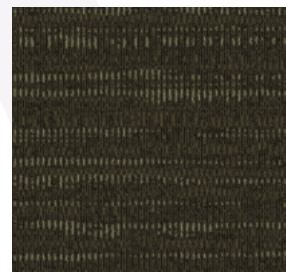
CASH COW - 743



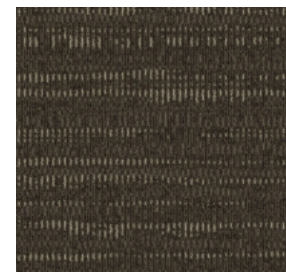
CASH COW - 744



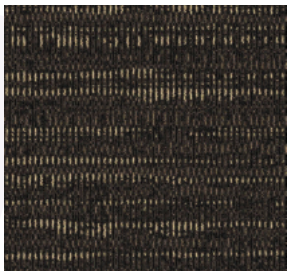
CASH COW - 745



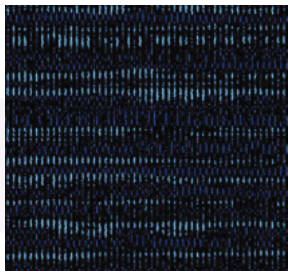
CASH COW - 746



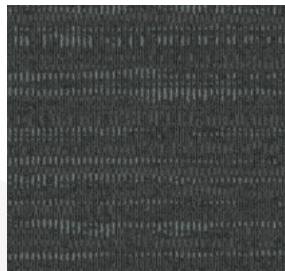
CASH COW - 747



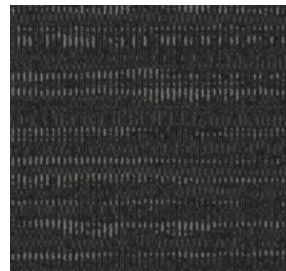
CASH COW - 749



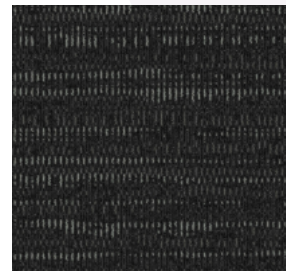
CASH COW - 755



CASH COW - 776



CASH COW - 777



CASH COW - 778



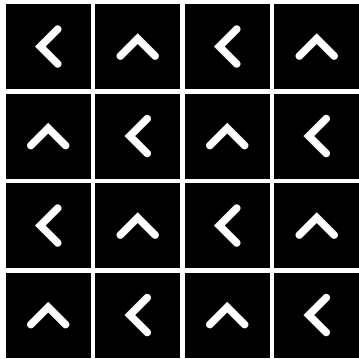
CASH COW - 779



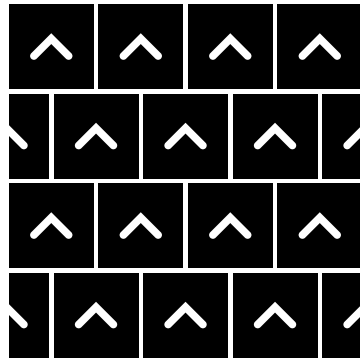


HOW TO INSTALL

QUARTER TURN



BRICK





Standard
CARPETS

www.standardcarpets.com